

**SPECIFICATION**

**CHASSIS:**  
 -INTERNATIONAL HV607 SBA REGULAR CAB  
 -40,000 LB GVWR; 14,000 LB FRONT / 26,000 LB REAR  
 -DIESEL ENGINE, CUMMINS L9, EPA 2021, 400 HP  
 -AUTOMATIC TRANSMISSION, ALLISON 3000 EVS

**PUMP:**  
 -HALE MIDSHIP QFLO1250  
 -1250 USGPM (4732 LPM) (1041 IGPM) AT 150 PSI  
 -THIRD PARTY CERTIFICATION MEETING NFPA 1901-2016 EDITION

**PLUMBING:**  
 -2 x 6" SUCTION, (1)ROAD (1)CURB BOTH MIV ELECTRIC  
 -2 x 2 1/2" GATED SUCTION, (1)ROAD, (1)CURB  
 -3 x 2 1/2" DISCHARGE, (2)ROAD (1)CURB  
 -1 x 1 1/2" FRONT DISCHARGE  
 -1 x 5" STORZ DISCHARGE, W/3" PLUMBING (1)REAR ELECTRIC  
 -1 x 5" STORZ DISCHARGE, W/4" PLUMBING (1)CURB HANDWHEEL  
 -1 x 4" STORZ SUCTION, W/5" FITTING (1)FRONT BUMPER ELECTRIC  
 -3 x 1 1/2" CROSS LAY'S  
 -1 x 3" MONITOR STAND PIPE  
 -1 x 2 1/2" EXTERNAL TANK FILL FIREMAN'S FRIEND  
 -4" TANK TO PUMP, W/4" BALL VALVE, HAND WHEEL  
 -2" TANK FILL AKRON

**TANK:**  
 -1000 USG (835 IG) WATER TANK

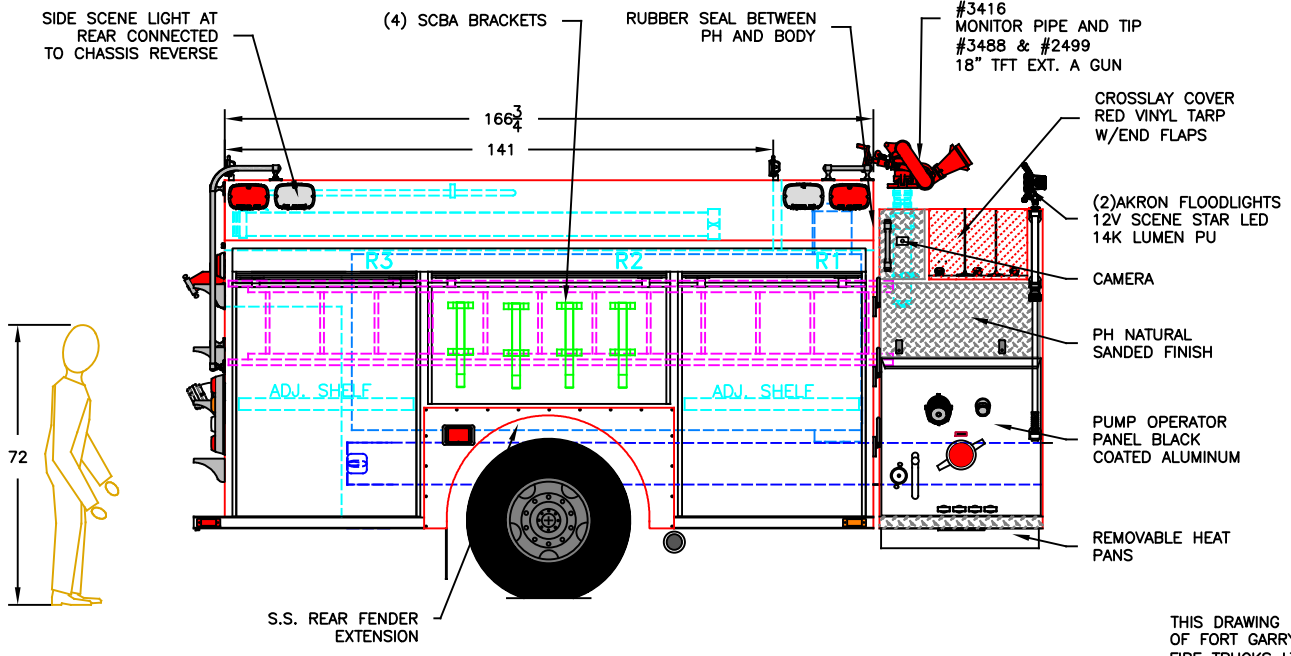
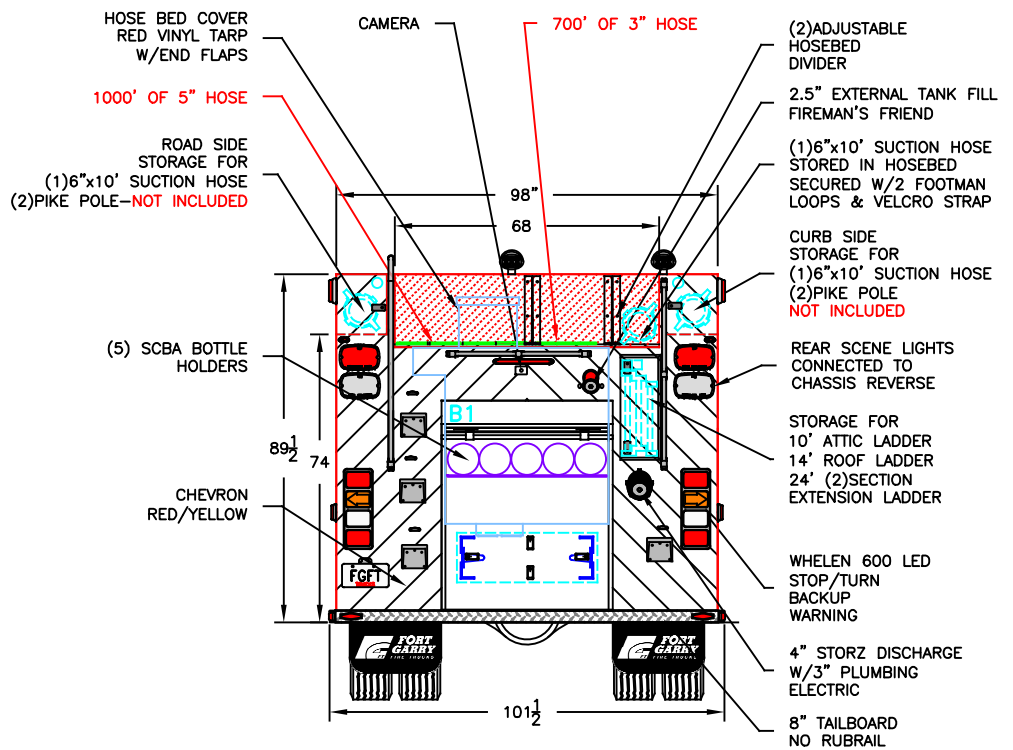
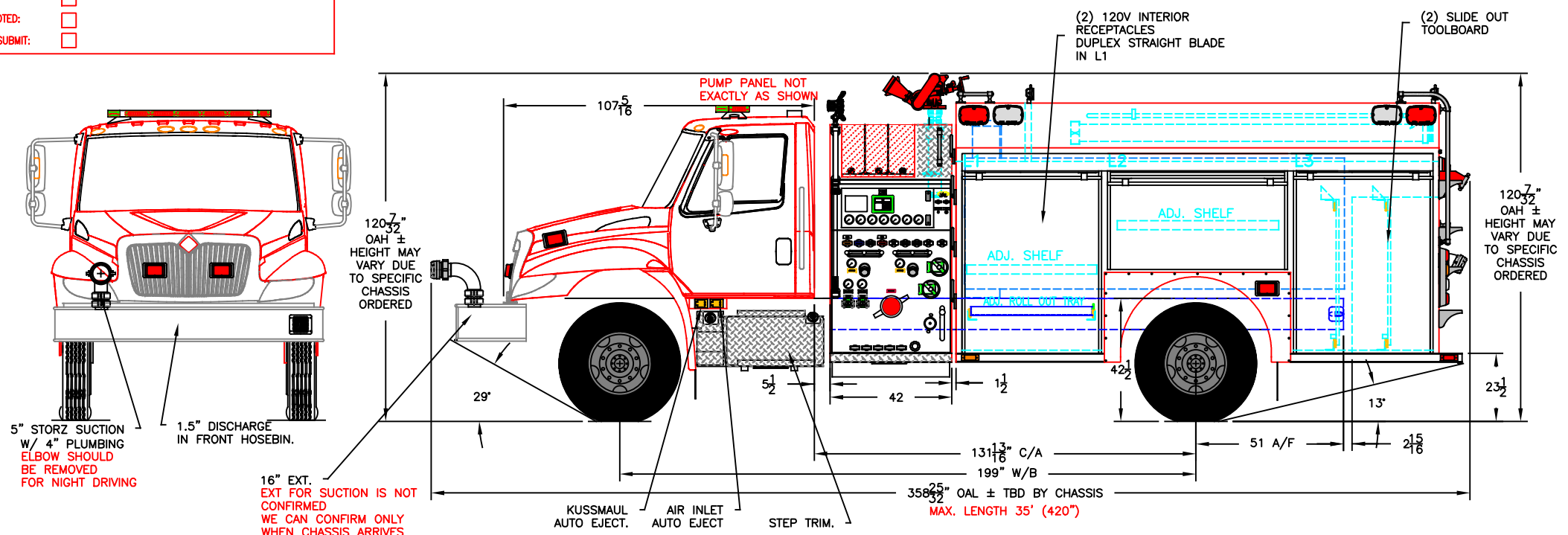
**BODY:**  
 -ER NO STANCHIONS ALUMINUM HIGH/HIGH  
 -BODY UNDERCOATING CORASHIELD

**EMERGENCY EQUIPMENT-ACCESSORIES:**  
 -LIGHT BAR 56"  
 -SIREN CONTROL CONCEN SAPPHIRE  
 -100W SPEAKER  
 -2 x FLOOD LIGHTS  
 -2 x GRILLE LIGHTS RED  
 -4 x SIDE UPPER WARNING LIGHTS RED  
 -4 x SIDE LOWER WARNING LIGHTS RED  
 -2 x REAR UPPER WARNING LIGHTS RED  
 -2 x REAR LOWER WARNING LIGHTS RED  
 -6 x SCENE LIGHTS  
 -6 x GROUND LIGHTS  
 -AIR CHARGING PROVISION  
 -BATTERY CHARGING PROVISION  
 -ANTENNA MOUNT  
 -10' ATTIC LADDER  
 -14' ROOF LADDER  
 -24'(2)SECTION EXT. LADDER  
 -(3) 6" x 10' SUCTION HOSE KOCHER  
 -(1) 6" x STORZ BARREL STRAINER KOCHER

**MODEL:**  
 WHELEN JUSTICE 56"  
 WHELEN SMART SIREN  
 WHELEN SA315P  
 DT1010Wx6  
 WHELEN 600 LED  
 WHELEN M9 LED  
 WHELEN 600 LED  
 WHELEN M9 LED  
 WHELEN 600 LED  
 WHELEN M9LZC LED  
 LUMA BAR H20-12"  
 KUSSAMUL CHEIF SERIES  
 DUO SAFETY 585-A  
 DUO SAFETY 775-A  
 DUO SAFETY 900-A

BODY TYPE: EXTRUDED ALUMINUM  
 TANK TYPE: DRY SIDE

CUSTOMER APPROVAL	IF NOT RETURNED TO FGFT BY THE DATE INDICATED BELOW, WE WILL PROCEED WITH FABRICATION AS PER THE DRAWING
SALES SIGNATURE:	
CUSTOMER SIGNATURE:	
DATE:	
RETURN TO FGFT BY:	DATE: <b>ASAP</b>
REVIEWED BY:	
REVIEW DATE:	
ACCEPTED AS IS:	<input type="checkbox"/>
ACCEPTED WITH REVISION NOTED:	<input type="checkbox"/>
REVISE AS NOTED AND RE-SUBMIT:	<input type="checkbox"/>



COMPT.	COMPARTMENT FRAME DIMENSIONS
L1	48.25W x 69H x 27D
L2	62.25W x 40H x 27D
L3	48.25W x 69H x 27D
R1	48.25W x 69H x 15/27D
R2	62.25W x 40H x 15D
R3	48.25W x 69H x 15/27D
B1	44W x 54H x 30D

- THE DRAWING IS FOR REFERENCE PURPOSE, ONLY. THE DRAWING MAY OR MAY NOT SHOW ALL ITEMS AS DESCRIBED IN THE WRITTEN DETAILED SPECIFICATION.
- INCLUSION OF AN ITEM ON THE DRAWING DOES NOT CONSTITUTE INCLUSION OF THAT ITEM WITH THE FINAL DELIVERY OF THE UNIT. SPECIFICATION SHALL BE FINAL AUTHORITY TO BE DETERMINED WHAT IS SUPPLIED ON THE APPARATUS.
- THE EFFECTIVE DOOR OPENING FOR ROLLUP DOORS WILL BE REDUCED APPROX. 10" IN HEIGHT, 2" IN DEPTH AND 2" IN WIDTH FROM SHOWN FRAME OPENINGS AND 2" IN HEIGHT, 3" IN DEPTH AND UP TO 4" IN WIDTH FOR PAN DOORS. DIMENSIONS TOLERANCE ± 1/4"
- PUMP RATING AND TANK CAPACITY ARE SHOWN AS NOMINAL VALUES. THE ACTUAL VALUES MAY VARY.
- CHASSIS GVWR SHOWN IS THE MINIMUM REQUIRED FOR STANDARD BODY DEPENDING OF OPTIONS, GVWR MAY NEED TO BE INCREASED.
- COMMERCIAL OEM CAB STEPS MAY NOT MEET ULC STANDARD. SELECT CUSTOM STEPS WHEN REQUIRED
- OVERALL HEIGHT IS IN LOADED CONDITION, UNLOADED HEIGHT MAY BE 4" ABOVE HEIGHT SHOWN. AFTER TRUCK IS COMPLETED ADDITIONAL STEPS MAY BE REQUIRED TO MEET THE STANDARD.
- DIMENSIONS SHOWN ARE APPROXIMATE AND ARE SUBJECT TO CHANGE AS MAY BE FOUND NECESSARY DURING DESIGN. DO NOT SCALE DRAWING.
- MINOR DETAILS AND REFLECTIVE STRIPING ARE NOT SHOWN.

THIS DRAWING IS PROPERTY OF FORT GARRY FIRE TRUCKS LTD (FGFT) AND MUST NOT BE COPIED OR REPRODUCED IN WHOLE OR IN PART, BY ANY METHOD WHATSOEVER, WITHOUT AUTHORIZATION OF FGFT.

C	CUSTOMER SIGN OFF DRAWING	SP	15 MAY 2024
B	CUSTOMER SIGN OFF DRAWING	SP	25 OCT 2022
A	CRM DRAWING		
REV	DESCRIPTION OF CHANGE	BY	DATE

**FORT GARRY**  
 FIRE TRUCKS  
 WWW.FGFT.COM  
 WINNIPEG, MANITOBA, CANADA 1-800-565-3473

DESCRIPTION:	<b>CONESVILLE F.D.</b>		
SCALE:	DWG. BY:	CHK. BY:	DATE:
1:50	TV		06 MAY 2021

MODEL:	SHEET:
ERS08H5	1 OF 1
DWG. NO. :	
J0300	